

ABOUT US

Belarus Re was established in 2006 as the only specialized reinsurance organization in the Republic of Belarus, offers a full range of reinsurance services and provides complex protection of the clients in accordance with the international standards.

Belarus Re is 100% state own enterprise with significant capital in the amount of 105 millions USD and stable reinsurance portfolio.

We follow principles of transparency in our activities that is confirmed by independent auditory company, annual audited reports prepared in accordance with the International Financial Reporting Standards (IFRS).



SOLUTION



TREATY & FACULTATIVE REINSURANCE

RATINGS

ACRA UPGRADES REPUBLICAN UNITARY ENTERPRISE "BELARUSIAN NATIONAL REINSURANCE ORGANIZATION" TO BB -, OUTLOOK STABLE

ACRA



TEL/FAX: +375 (17) 357 27 11



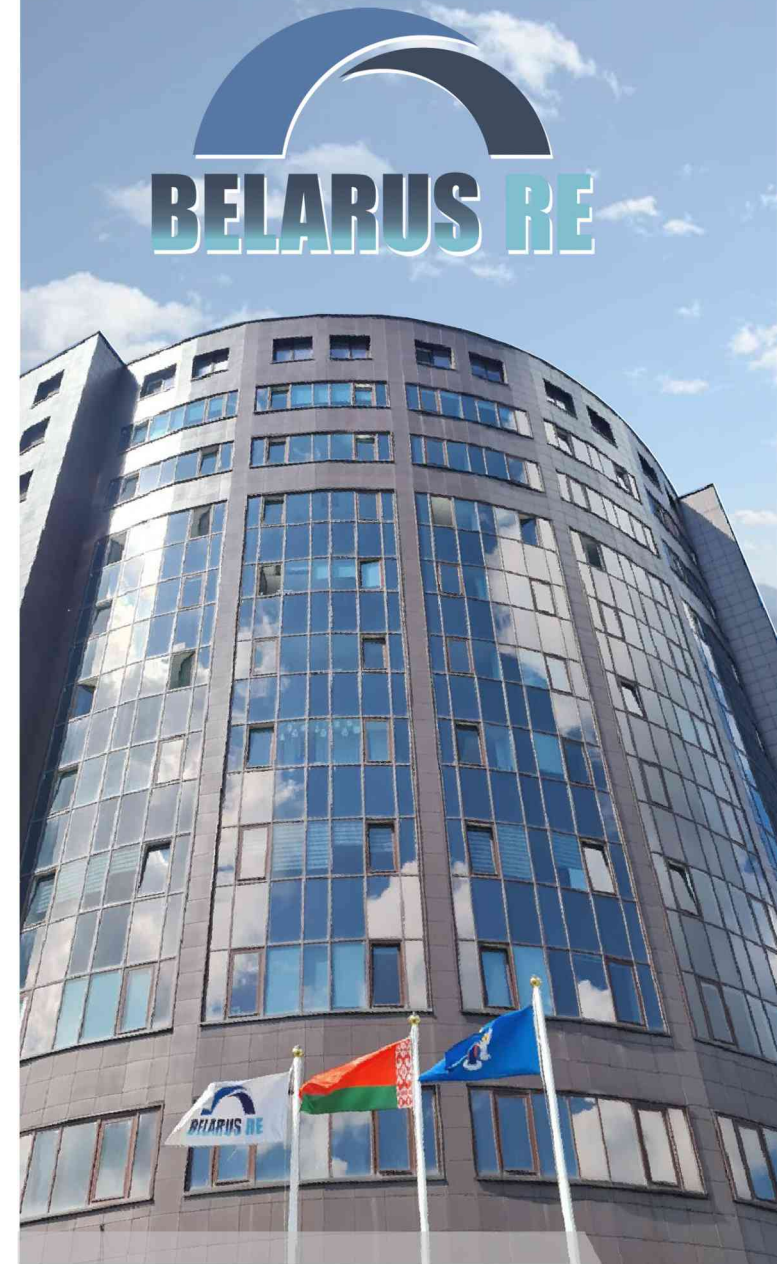
E-MAIL: info@belarus-re.com



BELARUS, MINSK
66-185 K.Liebknecht Str., 220036



www.belarus-re.com



Belarusian National Reinsurance Organization

CONTACT



Ms. Volha Tarasevich
Director General



Mr. Aleksey Matsko
Deputy Director General



Ms. Oksana Shishkevich
Deputy Director General



Mr. Anton Trushyn
Deputy Director General



Ms. Natallia Varvashenia
Head of International
Reinsurance
and
Retrocession Directorate



Mr. Dmitry Kapustinsky
Deputy Head of International
Reinsurance
and
Retrocession Directorate



Ms. Iryna Haurylchik
Deputy Head of International
Reinsurance
and
Retrocession Directorate

Belarus Re is
the part of:









Belarusian
Association
of Insurers



HIGHLIGHTS

(As at 31.12.2025)

 <p>Premium written (2025, USD million)</p> <p>67.9</p>	 <p>Equity capital as of 01.01.2026, USD million</p> <p>105</p>
 <p>Combined Ratio 2025</p> <p>0.94</p>	 <p>Net profit (2025, USD million)</p> <p>2.6</p>
 <p>Liability written (2025, USD million)</p> <p>25 026</p>	 <p>Indemnity paid (2025, USD million)</p> <p>39.5</p>

Employees



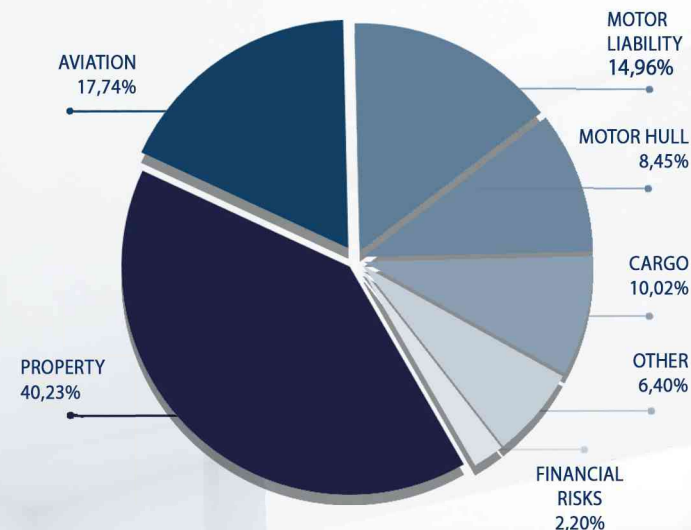
64

LIMITS

BY CLASSES OF BUSINESS, USD

Property	10 000 000
CAR/EAR	5 000 000
Cargo	2 000 000
Aviation Liability	7 500 000
Aviation Hull	500 000
Third Party Liability	5 000 000
Manufacturer's liability	2 000 000
Liability of hazardous facilities	2 000 000
Professional liability	2 000 000
Directors, officers and company liability (D&O)	2 000 000

LIABILITY WRITTEN BY CLASSES OF BUSINESS



WRITTEN PREMIUM STRUCTURE DYNAMICS (REINSURANCE)

